

1988 ANNUAL REPORT



FIREFIGHTER	JOINED	DATE	RANK DURING 1988
GARRETT, LOYD	1951	MARCH 01	FIREFIGHTER EMT-D
GOODWIN, RICHARD	1954	JULY 10	* FIREFIGHTER EMT-D
SORENSON, DONALD	1961	JULY 09	FIRE CHIEF EMT-D
HENRY, DONALD	1967	AUGUST 09	FIRE CHIEF EMT-D
VIOLANTE, DAVID	1974	JULY 05	CAPTAIN EMT-D
FITZGERALD, MARK	1978	MARCH 07	CAPTAIN EMT-D
LECROY, LOU	1978	DECEMBER 05	FIREFIGHTER
BROOKS, JAMES	1979	FEBRUARY 14	LIEUTENANT EMT-D
JOHNSTON, JOHN	1979	OCTOBER 07	LIEUTENANT EMT-D
RANKIN, DAVID	1980	JUNE 07	FIREFIGHTER EMT-D
SWARTOSKY, MIKE	1980	OCTOBER 07	FIREFIGHTER EMT-D
JACOBS, SCOTT	1982	AUGUST 07	FIREFIGHTER
MCBRIDE, RICHARD	1982	SEPTEMBER 05	FIREFIGHTER EMT-D
RYSTROM, JOE	1982	SEPTEMBER 05	FIREFIGHTER EMT-D
CORNER, ROBERT	1983	APRIL 02	* FIREFIGHTER EMT-D
MOFFAT, PAUL	1983	SEPTEMBER 01	* FIREFIGHTER EMT-D
SCHMIDT, TED	1984	APRIL 02	FIREFIGHTER EMT-D
KINNE, JEFF	1984	AUGUST 15	FIREFIGHTER EMT-D
CUNNINGHAM, TOM	1984	AUGUST 26	FIREFIGHTER
RAUM, MIKE	1985	MARCH 03	FIREFIGHTER EMT-D
SWIFT, JAMES	1986	FEBRUARY 01	FIREFIGHTER EMT-D
KINNE, STEVE	1986	JUNE 28	FIREFIGHTER
DOPPMANN, JEFF	1987	APRIL 30	FIREFIGHTER
WILSON, SEAN	1987	MAY 02	* FIREFIGHTER
SCHWEISS, BOB	1987	AUGUST 27	FIREFIGHTER
BOYER, MIKE	1988	MARCH 07	FIREFIGHTER
FOWLER, MARTIN	1988	MAY 23	FIREFIGHTER
CURTIS, MIKE	1989	JANUARY 07	FIREFIGHTER
HENRY, DONALD JR	1989	JANUARY 07	FIREFIGHTER
PALMER, KIM	1989	JANUARY 09	FIREFIGHTER
KINNE, DENNIS	1989	JANUARY 19	FIREFIGHTER
MILLER, TERRY	1989	JANUARY 19	FIREFIGHTER

BOARD OF COMMISSIONERS

HOYT, JIGGS	1974	JANUARY 09	COMMISSIONER
SEIFERT, VICTOR	1979	OCTOBER 15	CHAIRMAN
FULTON, JIM	1983	NOVEMBER 23	SECRETARY

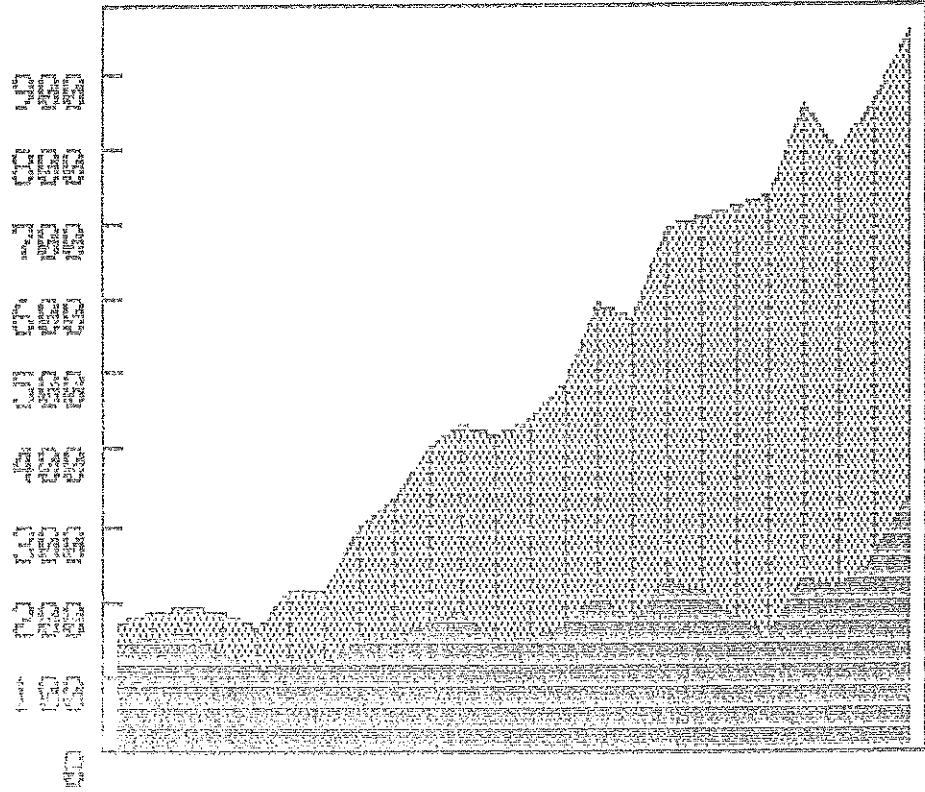
* left during year

	<u>1988</u>	<u>1987</u>
INCIDENTS TOTALS	954	864
MANPOWER TOTALS	7463	6993
DAY INCIDENTS	512	471
NIGHT INCIDENTS	442	393
AID INCIDENTS	692	609
SPECIAL INCIDENTS	27	17
MEDIC RESPONSES	174	177
POLICE ON LOCATION	218	235
MUTUAL AID - GIVEN	74	68
MUTUAL AID - RECEIVED	22	20
TIME GENERAL MINUTES	42,663	50,250
TIME SPECIAL MINUTES	1,124	483
TOTAL TIME MINUTES	43,787	50,733
MILES TRAVELED AIR 20	57	N/A
MILES TRAVELED CAR 21	720.0	843.0
MILES TRAVELED ENGINE 22	382.5	491.0
MILES TRAVELED AID 23	1,772.0	1,529.0
MILES TRAVELED ENGINE 24	750.0	732.0
MILES TRAVELED ENGINE 25	69.0	58.0
MILES TRAVELED GENERAL	3,715.8	3,620.0
MILES TRAVELED SPECIAL	34.7	33.0
MILES TRAVELED TOTAL	3,750.5	3,653.0
AMBULANCE TRANSPORT	307	240
MEDIC TRANSPORT	70	73
F.D. TRANSPORT	16	9
PRIVATE TRANSPORT	84	80
POLICE TRANSPORT	5	8
PUMPS USED ENGINE 22	326	340
PUMPS USED ENGINE 24	701	695
PUMPS USED ENGINE 25	20	40
TOTAL PUMPS USED TIME	1,047	1,075
1 INCH HOSE FEET USED	945	1,175
1-1/2 INCH HOSE USED	50	300
1-3/4 INCH HOSE USED	4,700	4,800
2-1/2 INCH HOSE USED	1,450	450
4 INCH LDH HOSE USED	4,300	2,450
TOTAL HOSE FEET USED	11,445	9,175

	<u>1988</u>	<u>1987</u>
LADDERS FEET USED	320	417
AIR PAK MASK MINUTES USED	1,300	6,665
GENERATOR MINUTES USED	656	1,074
WATER VACUUM MINUTES USED	0	15
SALVAGE COVERS UNITS USED	7	5
SMOKE EJECTOR MINUTES USED	935	1,400
PORTABLE EXTINGUISHER UNITS	8	11
STRUCTURE VALUE	\$9,073,600.00	\$9,870,500.00
CONTENTS VALUE	\$388,500.00	\$877,500.00
STRUCTURE LOSS	\$276,250.00	\$723,500.00
CONTENTS LOSS	\$53,650.00	\$47,600.00
STRUCTURE INCIDENTS DAY	14	21
STRUCTURE RESPONSE MEMBERS	162	222
STRUCTURE INCIDENTS NIGHT	12	17
STRUCTURE RESPONSE MEMBERS	121	136
AID INCIDENTS DAY	355	323
AID RESPONSE MEMBERS	2,586	2,274
AID INCIDENTS NIGHT	337	286
AID RESPONSE MEMBERS	2,686	2,506

	<u>1988</u>	<u>1987</u>
MV - MOTOR VEHICLE	89	75
PV - PEDESTRIAN/VEHICLE	6	10
MC - MOTORCYCLE	4	4
BI - BICYCLE bicycle/car	4	11
ME - MACHINERY/EQUIPMENT	1	1
GS - FIREARMS	4	5
BU - BURN	1	8
BL - BLUNT INSTRUMENT	0	3
KN - SHARP INSTRUMENT	11	9
AS - BEATING/FIGHT/ASSAULT	40	42
SX - SEXUAL ASSAULT	1	2
FA - FALL	63	44
SP - SPORTS OR PLAY INJURY	4	4
AN - ANIMAL CAUSED INJURY	2	1
AC - OTHER ACCIDENT/INJURY	11	10
ST - STRANGULATION/SUFFOCATION	0	0
AL - ALCOHOL INTOXICATION	7	8
OD - DRUG drug/alcohol	25	22
DT - DRUG/ALCOHOL WITHDRAWAL	0	0
AX - ACCIDENTAL OVERDOSE/POISON	6	3
AD - ADVERSE DRUG REACTION	2	2
MD - MEDICAL ILLNESS	348	282
OB - OBSTETRIC	6	7
PS - PSYCHIATRIC	12	14
XX - OTHER ALARM	40	44
FIRE, EXPLOSION	66	41
HAZARDOUS CONDITION	25	29
SERVICE CALL	47	57
GOOD INTENT CALL	25	18
FALSE CALL	25	18
OTHER SITUATION FOUND	0	18

WATER CONSUMPTION PER YEAR - 1965 TO 1988



FIRE/OTHER IND. COMMER.

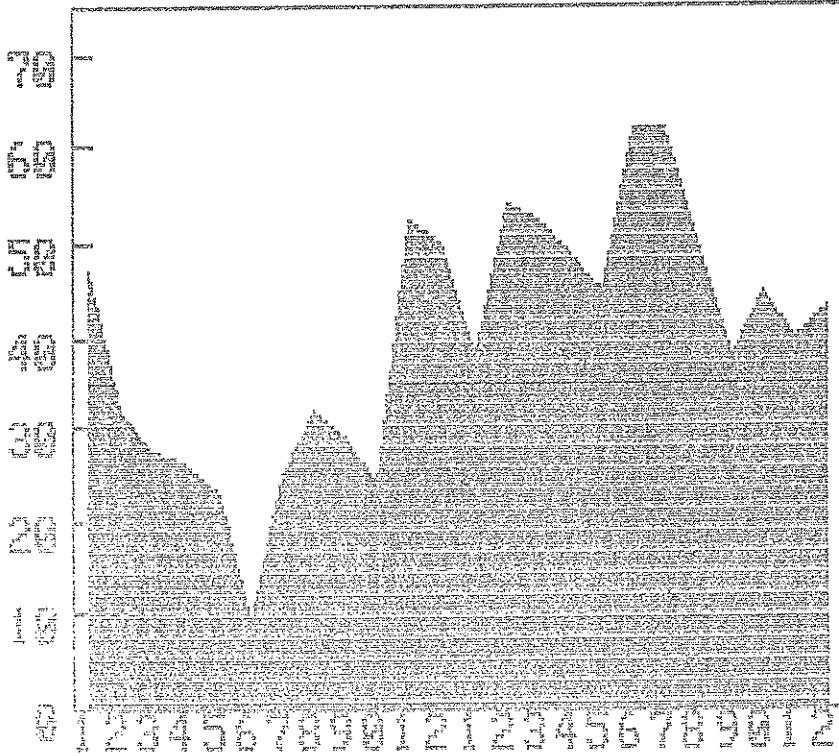
1965

1988

1000

0000 - 00000000000000000000

00000000000000000000



0000 00000000000000000000 0000

PERFORMANCE OF THE COMPANY

